

# *ALRODE EXT 7*

*ERF 505, 7 FLAMINK AVENUE*



Marco Bassetti: 082 468 2230  
E-mail: [marcob@rolag.net](mailto:marcob@rolag.net)

Jennifer Heydenrych: 011 455 0919  
E-mail: [jenniferh@rolag.net](mailto:jenniferh@rolag.net)

[www.rolag.net](http://www.rolag.net)

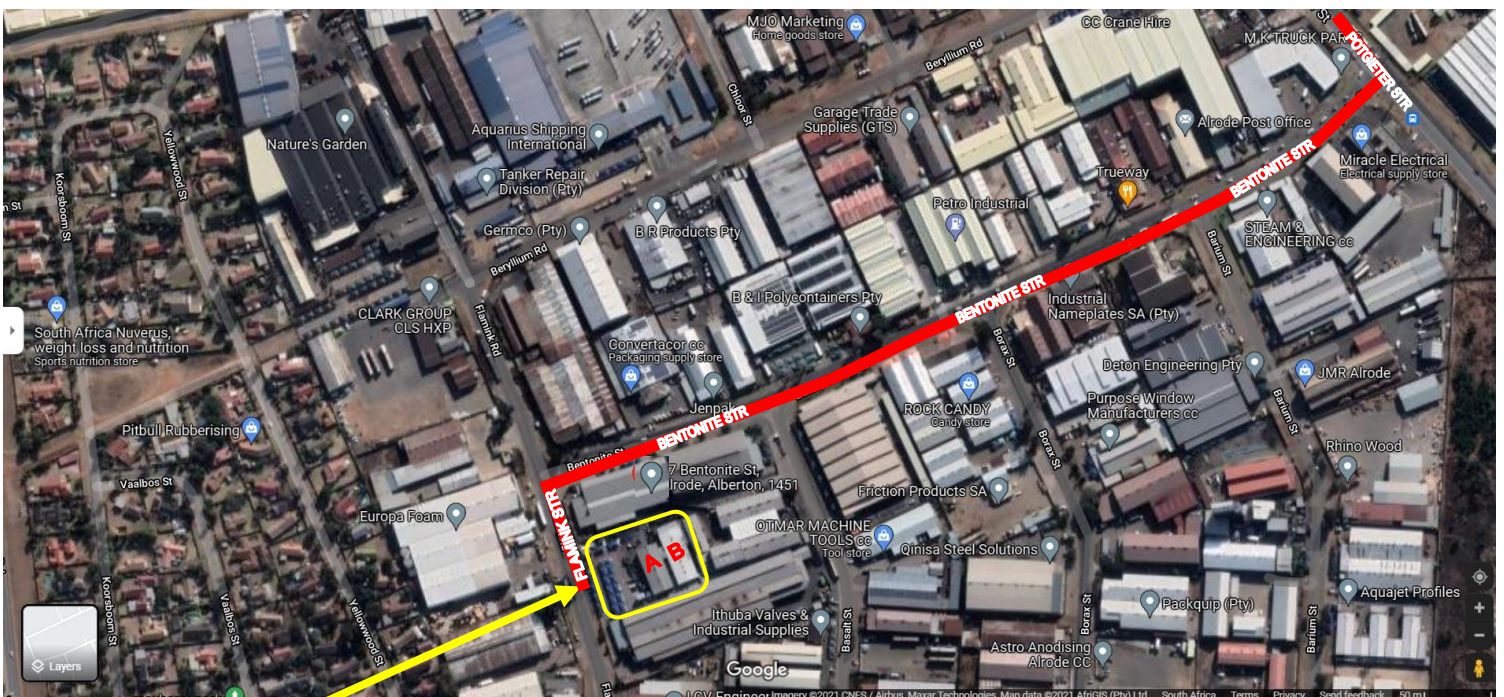
# FACTORY/WAREHOUSE

- Height to eaves:

505 A	±7.5m	±6.5m
505 B	±7m	±6.5m

- Total Power Supply: 800kva
- Total Stand Size: 4310m<sup>2</sup>
- Zoning: Industrial 1

AREA SCHEDULE	
<b>BUILDING A AREAS GROUND FLOOR</b>	
OFFICE	16.26m <sup>2</sup>
TOILETS	
CHANGE ROOM	18.09m <sup>2</sup>
WORKSHOP	545.60m <sup>2</sup>
PASSAGE	7.69m <sup>2</sup>
RECEPTION	18.32m <sup>2</sup>
KITCHENETTE	4.64m <sup>2</sup>
<b>SUBTOTAL</b>	<b>610.60m<sup>2</sup></b>
<b>BUILDING A AREAS 1ST FLOOR</b>	
OFFICE	32.47m <sup>2</sup>
PASSAGE	9.95m <sup>2</sup>
STORE ROOM	19.87m <sup>2</sup>
STAIRS	2.71m <sup>2</sup>
<b>SUBTOTAL</b>	<b>65.00m<sup>2</sup></b>
<b>BUILDING B AREAS GROUND FLOOR</b>	
BOARDROOM	17.57m <sup>2</sup>
TOILETS	
CHANGE ROOM	27.11m <sup>2</sup>
WORKSHOP	672.40m <sup>2</sup>
PASSAGE	16.24m <sup>2</sup>
RECEPTION	21.08m <sup>2</sup>
<b>SUBTOTAL</b>	<b>754.40m<sup>2</sup></b>
<b>BUILDING B AREAS 1ST FLOOR</b>	
OFFICE	42.80m <sup>2</sup>
PASSAGE	13.79m <sup>2</sup>
STORE ROOM	17.68m <sup>2</sup>
STAIRS	7.73m <sup>2</sup>
<b>SUBTOTAL</b>	<b>82.00m<sup>2</sup></b>
<b>SUB STATION</b>	
	52.39m <sup>2</sup>
<b>ABLUTIONS AND CHANGE ROOMS</b>	
	94.80m <sup>2</sup>
<b>GRAND TOTAL:</b>	<b>1658.59m<sup>2</sup></b>
SITE AREA:	4310.00m <sup>2</sup>
COVERAGE:	( 1511.59 / 4310.00 ) X 100 35%

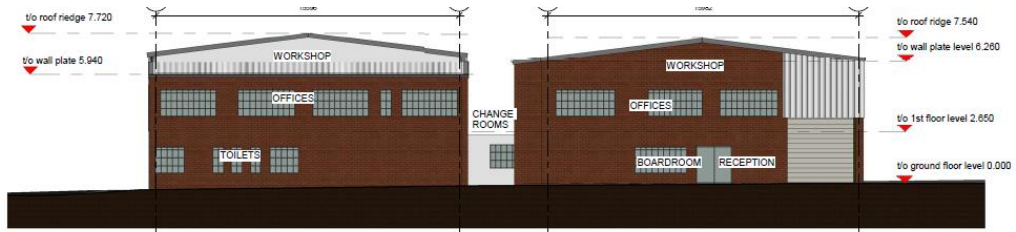


**SITE**

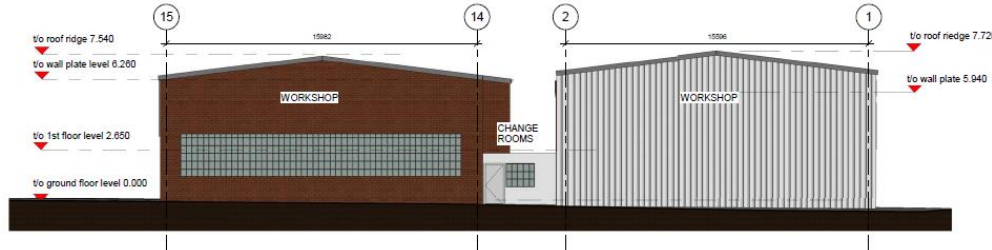
\*Information in these documents are subject to change without notice



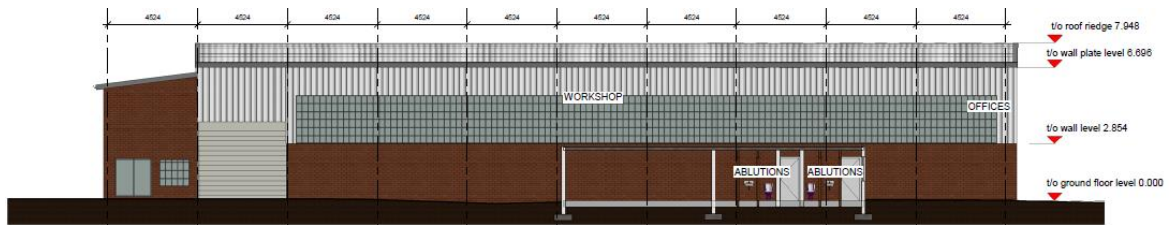
# Elevations:



ERF 505 Front Elevation  
BLD A & B  
1:100



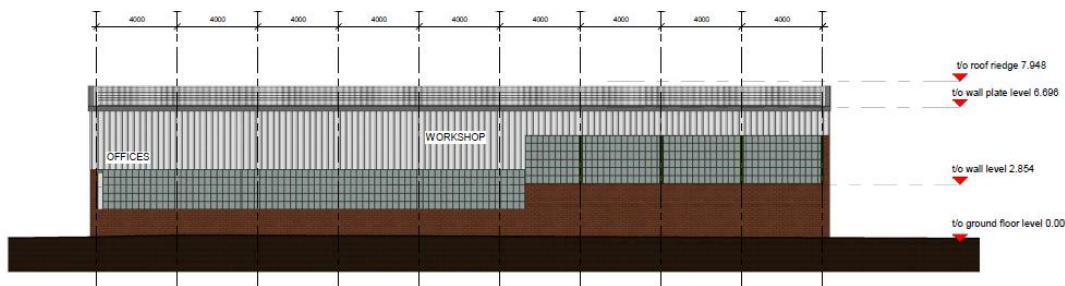
ERF 505 Back Elevation  
BLD A & B  
1:100



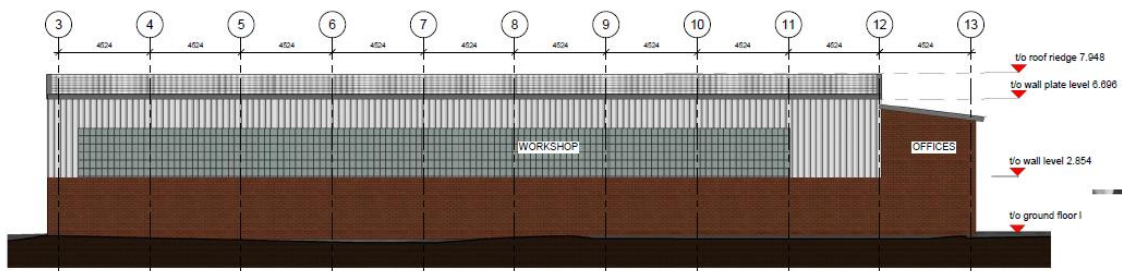
ERF 505 Left Elevation BLD  
2 B  
1:100



ERF 505 Left Elevation BLD  
1 A  
1:100

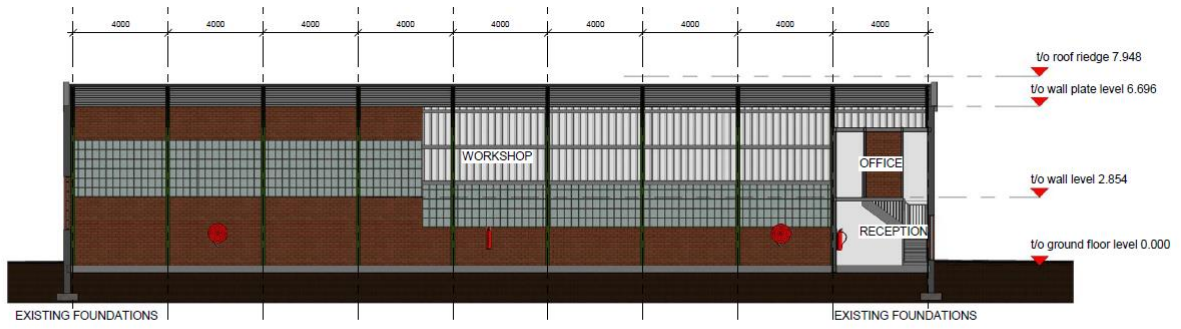


ERF 505 Right Elevation  
BLD A  
1:100



ERF 505 Right Elevation  
BLD B  
1:100

# Sections:



① ERF 505 Section A-A BLD A  
1 : 100

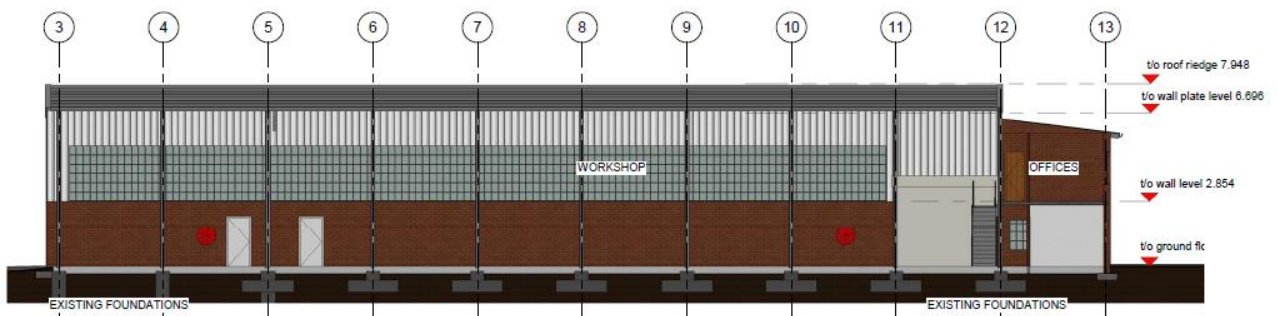


② ERF 505 Section B-B BLD A  
& B  
1 : 100

Pr 15



① ERF 505 Section C-C BLD  
A & B  
1 : 100



② ERF 505 Section D-D BLD  
B  
1 : 100