

ALRODE EXT 7

ERF 734, 9 FLAMINK AVENUE



Marco Bassetti: 082 468 2230
E-mail: marcob@rolag.net

Jennifer Heydenrych: 011 455 0919
E-mail: jenniferh@rolag.net

www.rolag.net

FACTORY/WAREHOUSE

- Cranes:
3 x 5 Ton Cranes – Overhead Gantries
1 x 10 Ton Cranes – Overhead Gantries
- Height to eaves:

734	Higher Section	
	±8m	±7m
	Lower Section	
	±10m	±9m

- Power Supply: 500kva
- Stand Size: 8716m²
- Zoning: Industrial 1

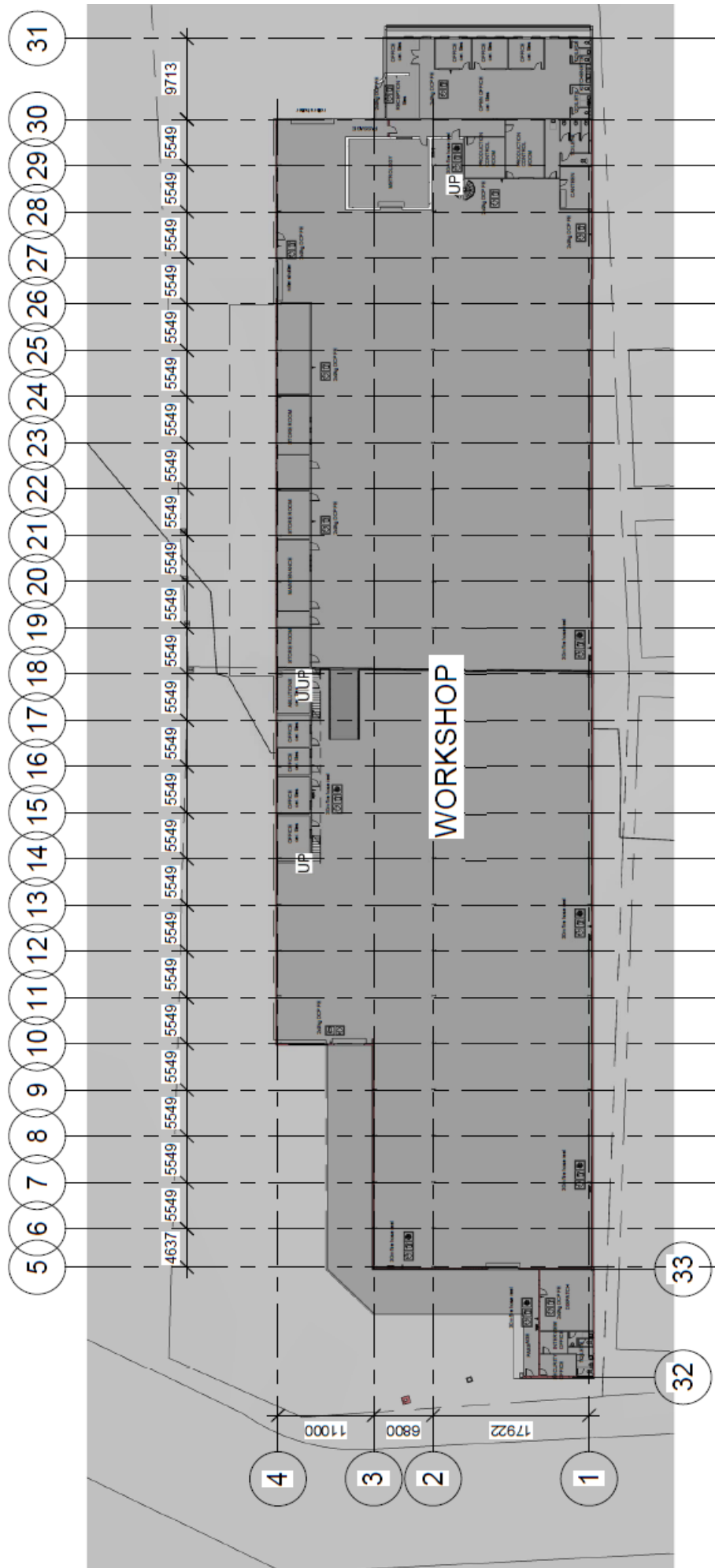
AREA SCHEDULE	
GROUND FLOOR AREAS WORKSHOP STAND 734	
OFFICE (MANAGEMENT)	231.60m ²
OFFICE (SECURITY)	83.60m ²
OFFICE (WORKSHOP)	191.30m ²
WORKSHOP	4208.70m ²
WORKSHOP CANOPIES	467.90m ²
STORE ROOMS	71.80m ²
ABLUTIONS	59.00m ²
CHANGE ROOMS	99.00m ²
METALLURGY ROOM	112.10m ²
LOBBY	11.90m ²
SUBTOTAL	5536.90m²
FIRST FLOOR AREAS WORKSHOP STAND 734	
OFFICES WORKSHOP	263.10m ²
TOTAL	5800.00m²
SITE AREA:	8716.00m ²
COVERAGE:	(5800.00 / 8716.00) X 100 66%



SITE

*Information in these documents are subject to change without notice

Site Plan:

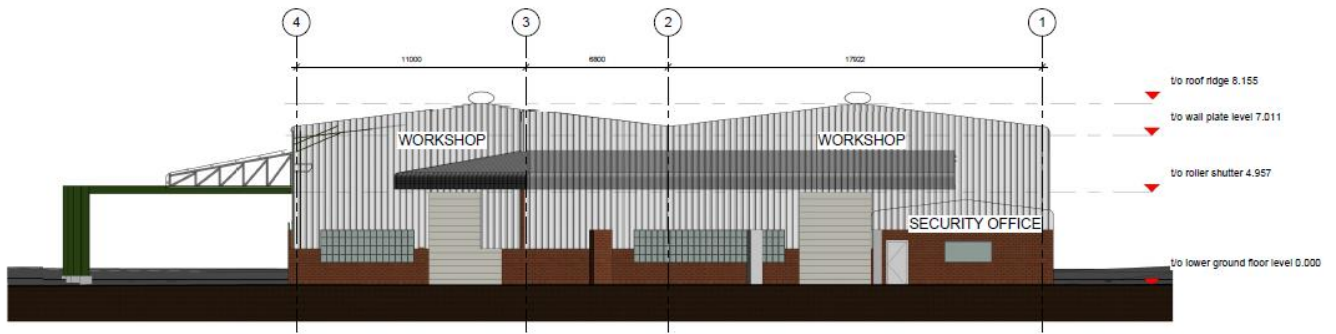


ERF 734 Gr FI Plan

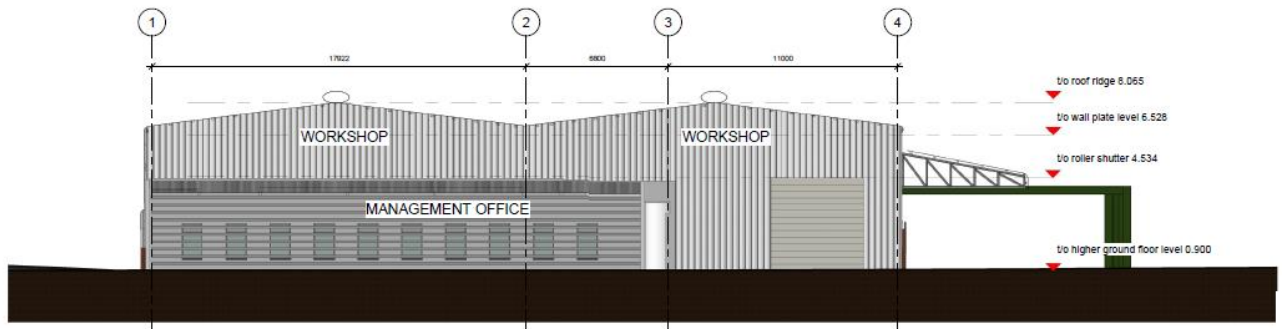
1 : 500

*Information in these documents are subject to change without notice

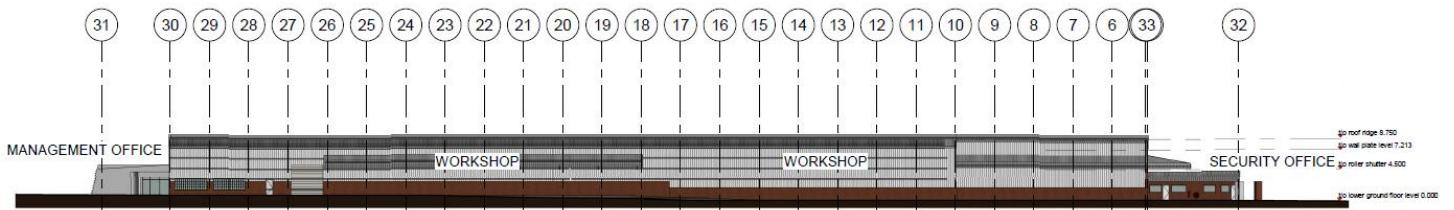
Elevations:



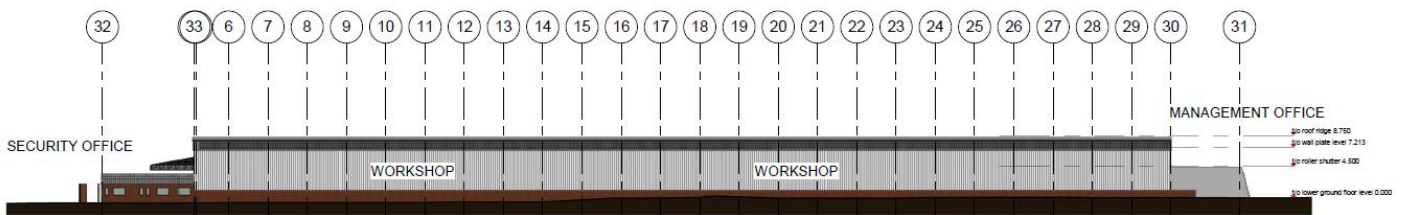
① ERF 734 Front Elevation
1 : 100



② ERF 734 Back Elevation
1 : 100

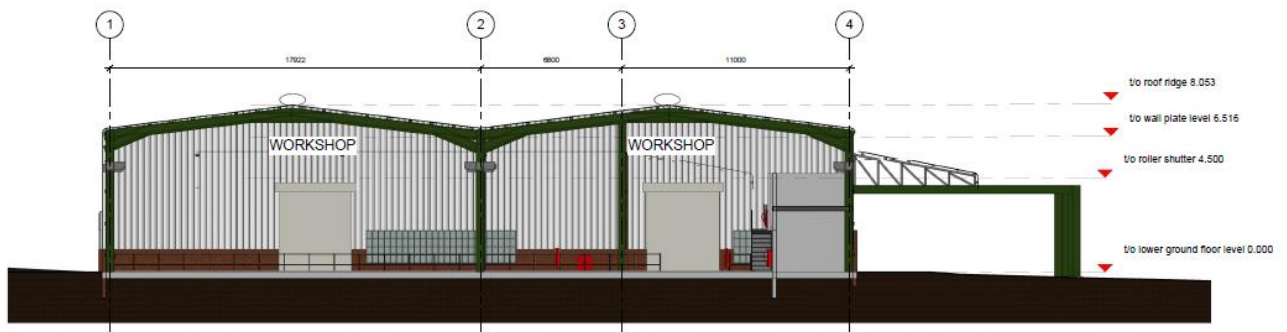


① ERF 734 Left Elevation
1 : 350

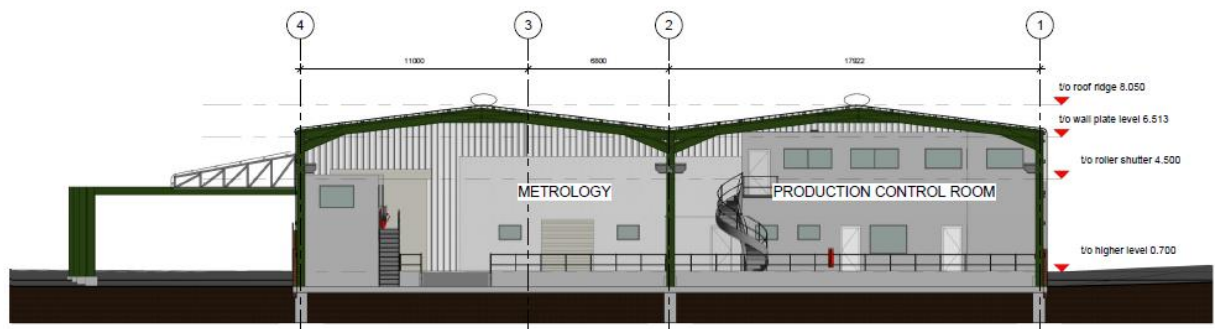


② ERF 734 Right Elevation
1 : 350

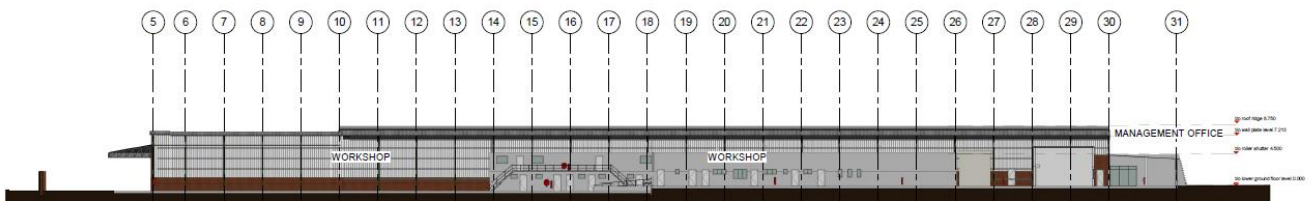
Sections:



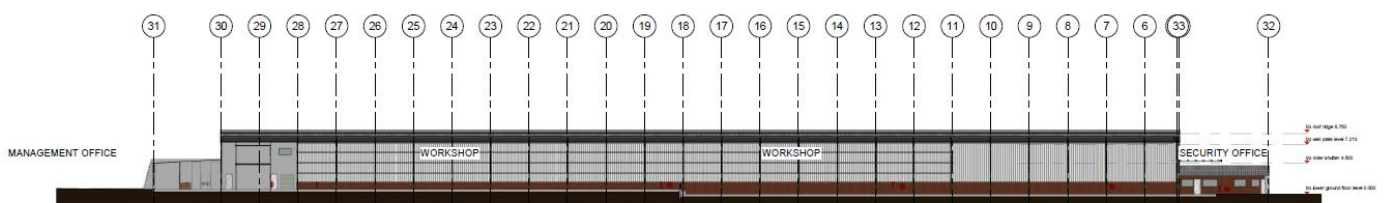
① ERF 734 Section A-A
1:100



② ERF 734 Section A-A1
1:100



② ERF 734 Section B-B
1:250



① ERF 734 Section B-B1
1:250